

# Galileo 360° Fares User Manual

Galileo Belgium  
Alfons Gossetlaan 54 - B2  
1702 Groot - Bijgaarden  
Belgium  
TEL: +32 2 / 506 14 21 (Service Desk)  
TEL: +32 2 / 506 14 00 (General)  
FAX: +32 2 / 506 14 20  
E-mail: [services.be@galileo.com](mailto:services.be@galileo.com)

Galileo Netherlands  
Neptunusstraat 35  
2132 JA Hoofddorp  
The Netherlands  
TEL: +31 23 / 56 75 300 (Service Desk)  
TEL: +31 23 / 56 75 333 (General)  
FAX: +31 23 / 56 75 332  
E-mail: [gnlservicedesk@galileo.com](mailto:gnlservicedesk@galileo.com)



# CONTENT

## **FARE DISPLAY**

International Fare Display -----	1
Fare Display Search Modifiers -----	3
Sub-displays & Shortcuts -----	6
North American fare Display -----	9

<b>FARE NOTES</b> -----	10
-------------------------	----

<b>MILEAGE CALCULATION</b> -----	11
----------------------------------	----

## **FARE QUOTE**

Fare Quote assumptions -----	13
Display Fare Constructions -----	14
Pricing Modifiers -----	15

<b>FARE QUOTE PLANNER</b> -----	19
---------------------------------	----

<b>TAXES</b> -----	22
--------------------	----

<b>LOW FARE SHOPPER TOOL</b> -----	23
------------------------------------	----

<b>QUICK REFERENCE</b> -----	26
------------------------------	----

# FARE DISPLAY

H/FD

## INTERNATIONAL FARE DISPLAY (IFD)

BASIC INPUT: **FDBKK**  
 RECOMMENDED INPUT: **FD28SEPBKK**

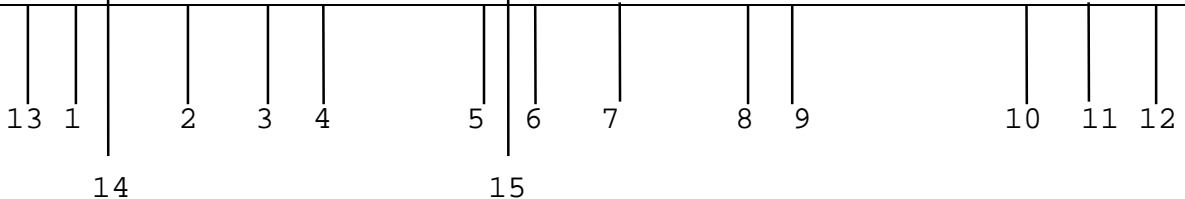
### RESPONSE:

```

FARES LAST UPDATED 28SEP 1326
‡FDBRUBKK28SEP
BRU-BKK TUE-28SEP04 YY
MPM 7461 EH 10713 TS 14662 AP
ADULT FARES/PRIVATE FARES FOR X5F

```

CX	FARE	FARE	C	AP	MIN/	SEASONS.....	MR	GI	DT
	EUR	BASIS			MAX				
1 -TG	577.00R	WITBE1	W	+	07/30	01SEP4-30SEP4	M	EH	
	<b>TC: WITBE</b>				<b>TD: YR1</b>				
2 QF	579.00R	QASIANL	Q	+	03/30	015AUG4-05DEC4	R	EH	
3 KL	590.00R	VBYAFKL	V	14+	V/1M		R	EH	
4 AF	295.00	LBYAFOW	L	+			R	EH	D
5 -SQ	595.00R	NSPBE	N	+	/1M		R	EH	



- CX** Carrier Code  
**YY = a IATA fare**
- FARE** Default is the currency of board point
- R** Return fare  
A blank indicates a one way fare
- FARE BASIS** Identification code of the fare.
- CLASS** When a carrier in CX column ⇒ booking class  
**When YY in CX column** (IATA fare)  
⇒ class of service if no carrier specified  
⇒ booking class when carrier specified

- 6. ADVANCE PURCHASE**                      3 characters  
The first 2 characters    : display the advance purchase period between ticketing and TRAVEL date.  
The 3th character        : a + is displayed IF there is a restriction on the period between ticketing and RESERVATION date (e.g. the ticket must be issued within 24 hours - see Fare Notes for more details)
- 7. MIN/MAX STAY**                      MIN: - SU : sunday rule  
    - V : variable  
    - W : week  
MAX: is shown in number of days or months.
- 8. O**    Outbound journey must be commenced during the period shown  
**I**    Inbound journey must be commenced during period shown.
- 9. SEASONS**                                Seasons of application  
If no dates: the fare is valid all year round, until further notice.
- 10. MR**                                        Mileage/routing indicator  
    M indicates that the fare is mileage based  
    R indicates that the fare is routing based
- 11. GI**                                        Global indicator, indicates the flown route.  
EH ⇒ Eastern Hemisphere              AT ⇒ Atlantic  
TS ⇒ TransSiberian                      AP ⇒ Atlantic Pacific
- 12. D**                                        Day restrictions: full details can be found in the Fare Notes
- 13. -**                                        The fare is a “ private “ fare = a negotiated fare between your agency and the airline. This fare is supposed to be a gross/selling fare.
- 14 TC**                                        Ticketing Code: replaces the fare basis code on the ticket
- 15 TD**                                        Ticket Designator: is appended to the fare basis code on the ticket

## FARE DISPLAY SEARCH MODIFIERS

More **SPECIFIC** Fare Displays can be obtained by using **SEARCH MODIFIERS**.

They can be used in 2 ways :

- as part of the initial FD input
- to modify an existing display

### Main SEARCH MODIFIERS:

#### **Carrier Modifier:**

/BA Specify carrier (for lata fares: the booking classes instead of class of service will be displayed in the CLASS column)

Input: FDMAN/BA (as part of the initial FD input)  
FD/BA (to modify an existing display)

#### **Journey Type Modifier:**

-RT Displays only return fares

-OW Displays only those fares which can be used for OW travel

#### **Validated Fare Display Modifier:**

.V Allows you to specify outbound and inbound travel and will return a validated Fare Display e.g. .V10JAN20JAN (outbound/departure = 10JAN and inbound/return = 20JAN)

#### **Q Surcharge Modifier:**

/Q Calculates approximate applicable surcharges (security/fuel/...) and adds it to the fare. Only non-conditional (= not with an IF statement in the rules) surcharges are included

#### **Currency Conversion Modifier:**

:NUC Displays fares in NUC

:LOC Reverts a NUC fare back into local currency

:CUR Returns a Fare Display in the requested currency.  
CUR to be replaced by the requested currency (e.g. :GBP)

#### **Round the World fares Modifier:**

-RTW Round the World fares (same origin and destination city)

-CTF Circle Trip fares (same origin and destination city)

## Passenger Type Code Modifier:

The default Fare Display returns Adult fares. To view all other Passenger Types the PTC (Passenger Type Code) modifier must be used.

**\*PTC** Show fares for all kind of Passenger Types (except normal adults).

#FDBRUMIL20DEC-T*PTC/AZ										
BRU-MIL MON-20DEC04 AZ AIRPORT FARES										
MPM 513 EH 428 EH										
IN/CH/CD/ZZ/SD/DT/SC FARES										
	CX	FARE	FARE	C	AP	MIN/	SEASONS.....	MR	GI	DT
		EUR	BASIS			MAX				
1	AZ	18.00R	TABBE2	T	+	/14		R	EH	
		PTC: <b>INF</b>								
2	AZ	118.00R	TABBE2	T	+	/14		R	EH	
		PTC: <b>CNN</b>								
		TC:TABBE2CH								
3	AZ	175.00R	TCDBE	T	+	SU/3M		R	EH	
		PTC: <b>SRC</b>								
4	AZ	175.00R	TZZBE	T	+	SU/3M		R	EH	
		PTC: <b>YTH</b>								



Directly below the fare basis code, the PTC code applicable to that fare will be indicated.

**PTC/code** Will decode the Passenger Type Code. E.g. PTC/YTH  
Further details can be found in the Fare Notes.

**PTC** Provides a list of all PTC codes. PTC/E provides a list starting with E.

You can access a specific Passenger Type directly if you know the PTC code.  
Underneath list summarizes the most common PTC codes used in the market.

- \*ADT Adults
- \*CNN Accompanied child (if used with FQ, NN must be replaced by the age)
- \*INF Infant without a seat
- \*SRC Senior Citizen (if used with FQ, RC may be replaced by the age)
- \*YTH Youth confirmed (if used with FQ, the age may be appended to the YTH code)
- \*ABB Abonnement fares (for FQ, the modifier \*FR must be used)
- \*VAC Visit another country adult
- \*VNN Visit another country child (if used with FQ, NN must be replaced by the age)
- \*UNN Unaccompanied child (if used with FQ, NN must be replaced by the age)
- \*ADA Agent Discount AD75N1
- \*AND Agent Discount AD50N1
- \*SEA Seaman
- \*SPA Accompanied spouse
- \*SPH Head of family spouse
- \*CMP Companion
- \*LBT Labour worker
- \*LNN Labour child
- \*LIF Labour infant

**Increase/Decrease pricing Modifier:**

- \*IP Increases the fare with a percentage. E.g. \*IP7 (increase with 7pc)
- \*IF Increases the fare with an amount. E.g. \*IF50 (increase with 50 EUR)
  
- \*RP Decreases the fare with a percentage. E.g. \*RP75 (decreases with 75pc)
- \*FA Decreases the fare with an amount. E.g. \*FA100 (decreases with 100EUR)

! The amounts specified with the IF and FA modifiers are taken in the currency of the Fare (= county of origin of the itinerary)

**Booking class modifier:**

- T Only fares with booking class T. Must be used in combination with the carrier code.

**High Low Modifier:**

- /X Displays fares in high to low order or v.v.

**Half Round Trip Modifier:**

- /2 Displays half return fares in NUC

**Global Indicator Modifier:**

- .TS Displays only fares via Transsiberian route

**Historical Fares:**

FDGVA22JUN04.T20JUN04/LX: Returns a historical fare display up to 90 days prior to current date  
The 1st date represents the dep. date, the 2nd date refers to the ticketing date.

**Private Fares :**

- :N Normal fares only
- :P Airline private fares only – selling levels
- :C **Airline private fares only – net levels**
- PRI-CODE Airline or own agency private fare with account code.  
E.g. FDBRUNYC-PRI-AGT (AGT is the account code)
- PRI-CODE\*Pseudo City Code Other agency (=broker) private fare with account code  
E.g. FDBRUNYC-PRI-PROMO\*DV0

**COMBINING ABOVE SEARCH MODIFIERS:**  
Search Modifiers may be used in any combination:  
E.g.: FD10JANBRUMAN-RT/BA\*CNN/Q

## SUB-DISPLAYS

### Routes:

To display the permitted route of a routing fare use: **FR\*n** (n=line number of the required fare).

INPUT: **FR\*1**

RESPONSE:

```
FR*1
BRU-DBV SUN-20JAN02 AF
ADULT FARES                                *SHORT FD*
  CX   FARE   FARE   C  AP  MIN/   SEASONS..... MR GI DT
      EUR   BASIS                MAX
  1  AF   477.00R QAPBE83  Q   7+ SU/2M                R  EH

SPECIFIED          ROUTE: 1000

BRU-PAR-ZAG(OU)DBV
```



### Fare Booking Codes:

Is used to find out the correct booking class for the **interline (= secondary)** carrier.

Step1: Ask for a FD on the **primary** carrier = the main transporting carrier, also the carrier with the most international miles within a fare component

(Note : the FL/ facility can be very useful to calculate flown miles - see pg.11):

```
‡FDBRUDBV20JAN/AF
BRU-DBV SUN-20JAN02 AF
MPM  1066 EH
ADULT FARES                                *SHORT FD*
ZZ/SD/DT FARES MAY ALSO EXIST
  CX   FARE   FARE   C  AP  MIN/   SEASONS..... MR GI DT
      EUR   BASIS                MAX
  1  AF   477.00R QAPBE83  Q   7+ SU/2M                R  EH
```

Step2: All the other airlines involved in the fare component are **secondary/interline** carriers. Ask for their booking class using underneath input:

**FDC\*n//YY** (n = line number of requested fare - YY = carrier code of the interline carrier)

```
‡FDC*1//OU
BRU-DBV SUN-20JAN02
  CX   FARE   FARE   C  AP  MIN/   SEASONS..... MR GI DT
      EUR   BASIS                MAX
  1  AF   477.00R QAPBE83  Q   7+ SU/2M                R  EH
  DATA FOR CARRIER - OU
  BOOKING CODE:      M
  FARE      WITHIN AREA2/3
  LEG      WITHIN EUROPE
```





**Fare details including last ticketing date:**

- FH\*n** Provides more detailed fare information such as:
- Travel Effective/Discontinue and Complete dates
  - Ticketing First/Last dates

```

>FH*4
BRU-BUD SAT-20NOV04 LH
TAXES/FEES NOT INCLUDED
ADULT FARES
      CX   FARE   FARE   C  AP  MIN/   SEASONS..... MR GI DT
          EUR   BASIS           MAX
4 -LH  167.00R WAXNOVBE W  7+ SU/1M                R  EH

          BRUBUD  LH
AMOUNT:          EUR/ 167.00
NUC EQUIV:       NUC/ 202.73
FBC:            WAXNOVBE
TRVL EFF/DIS:    15NOV0429JAN05
TKT EFF/DIS:     08NOV0431DEC04
TRAVEL COMP:     31JAN05
FOOTNOTE:        9W
FARE USAGE:      RT
GLOBAL DIR:      EH
FARE TYPE:       XPN
CONST ZONES:
SUPP/TARIFF:     ATP  1/916
ROUTE/MIL:       916/7547
RULE NUMBER:     916/BE08
PASNGR TYPE:     ADT
DAY TYPE:
SEASON TYPE:
NORMAL/SPECL:    SPECIAL
DISPLAY CAT:     L

```

## **SHORTCUTS**

### **Change direction of Fare Display :**

**FDB** : Fare Display Back

**Fddbkk** : Changes the destination of an original FDBRUSIN into FDBRUBKK

**Fdolon** : Changes the origin of an original FDBRUSIN into FDLONSIN

### **Convert a foreign currency fare into Euro:**

**FZSn** (n = line number of the fare)

**NORTH AMERICAN FARE DISPLAY** (Domestic USA: NAFD)

INPUT: **FDBOSMIA**

RESPONSE:

FARES LAST UPDATED 18OCT 0005							
#FDBOSMIA18OCT							
BOS-MIA DEPART 18OCT							
ADULT/VU FARES							
	USD	FARE	MIN/	XL	TVL DATES	TKT DATES	
CX	FARE	BASIS	AP	MAX	FE	FIRST/LAST	FIRST/LAST
1 UA	54.88	TA14PN3	14+	--/--	++	-/03MARC	-/-
2 AA	54.88	QA14Q50N	14+	--/--	++	-/03MARC	-/-
3 DL	54.88	TA14N99	14+	--/--	++	24SEP/03MARC	-/-
4 FL	54.88	T14FL	14+	--/--	++	21SEP/14JANC	-/21OCT
5 NW	109.77R	KR1450VN	14+	--/--	++	03OCT/03MARC	-/21OCT
6 US	109.77R	TRA14SN	14+	--/--	++	23SEP/03MARC	-/-
7 AA	226.98R	NR14C50N	14+	--/--	++	-/-	-/-
) ‡							



1. FARE BASIS: the 1st character indicates the booking class code

2. ADVANCE PURCHASE:

- first 2 characters: display the advance purchase period between ticketing and TRAVEL date.
- 3th character : a + is displayed IF there is a restriction on the period between ticketing and RESERVATION. (e.g. ticket must be issued within 24 hours )  
( see Fare Notes for more details )

3. MIN/MAX STAY:

- no restriction
- ++ consult fare notes
- @@ no rules held

4. CANCELLATION FEE:

- NR non refundable
- no restriction
- ++ consult rules
- @@ no rules held

5. TRAVEL DATES FIRST/LAST

- C indicates travel to be completed by ...
- S indicates travel to be started by...

# FARE NOTES

H/FFUE

The input **FN \* n** (n=line number of required fare) will give access to a menu of paragraphs headings.

INPUT : **FN\*1**

RESPONSE :

The keyword **USE** indicates whether a PTC is required for Fare Quote

#FN*1	↓
001 BRUDUB 22NOV04 EI EUR 194.00 KZZ	STAY---/-- BK-K
<b>USE *YTH TO PRICE</b>	
0.APPLICATION	1.ELIGIBILITY
8.STOPOVERS	9.TRANSFERS
16.PENALTIES	18.TKT ENDORSE
21.AGENT DISC	
4.FLT APPS	5.ADV RES/TKTG
10.COMBINATIONS	15.SALES RESTR
19.CHILDREN	20.TOUR CON

FOLLOW UP or SHORTCUT inputs:

↓	↓	
<b>FN*ALL</b>	<b>FN*1/ALL</b>	Entire rule
<b>FN*P5.18.27</b>	<b>FN*1/P5.18.27</b>	Specific paragraphs – by number
<b>FN*ADV.END</b>	<b>FN*1/CHG</b>	Specific paragraphs – by abbreviation
<b>FN*DATE</b>	<b>FN*1/DATE</b>	Multiple paragraph abbreviation. Groups day/time-seasonality – blackout dates – travel & sales restrictions
<b>FN*DISC</b>	<b>FN*1/DISC</b>	Multiple paragraph abbreviation. Groups all kind of discounts : children – agent – tour conductor – others ...

ABBREVIATIONS and content of the most important Paragraphs

APP	application	B/O	blackout dates
WHO	eligibility	SUR	surcharges
DAY	day/time	ACC	accompanying travel
SEA	seasonality	TVL	travel restrictions
FLT	flight restrictions	TKT	sales/ticketing restrictions
ADV	advance reservations	CHG	penalties
MIN	minimum stay	CHD	children discounts
MAX	maximum stay	END	ticket endorsements
STP	stopovers	DSC	other discounts
TRF	transfers	TUR	tours (tour codes)
CMB	combinations	VAC	visit another country

SUMMARY INPUT:

**FN\*n/S** Offers immediate access to a summary of the fare notes  
If at the end of the text for a category a # is displayed, the agent should read the whole paragraph.

**! Indicates under the keyword USE whether a PTC is required for FQ**

# MILEAGE CALCULATION

H/FTPM

## BASIC INPUT: FL/

INPUT: FL/BRUFRAHAM

RESPONSE:

FL/BRUFRAHAM

CTY	DC	TPM	CUM	MPM	GI	LVL	LWL	HGL	REMARKS
BRU	2								
FRA	2 EH	190	190	228	EH	M	-	38	EXCEPTION
HAM	2 EH	257	447	360	EH	25M	15	3	EXCEPTION

CARRIER SPECIFIC EXCEPTIONS EXIST FOR LH/LT/U8/RO/SU/AZ/OA/  
SQ/S7/PS/OM/FV/FB/E8/AY/9U/2M/UF/GV/LX

**LVL** Indicates the level of mileage surcharge that has to be applied on the fare between the point of origin and the specified city.

M no surcharge  
25M 25 % surcharge  
EXC exceeds the maximum of 25 %.

### Other columns:

2 In between CTY and DC indicates the lata area for each city  
DC Global indicator for each sector  
TPM Ticket Point Mileage for each sector  
CUM Cumulative TPM's  
MPM Maximum Permitted Mileage for the fare component  
GI Global indicator for the fare component  
LWL Next lower surcharge band mileage  
HGL Next higher surcharge band mileage

## MILEAGE CALCULATION FROM BOOKING FILE:

E.g. FL/S1-4  
FL/S1-3.5

**MILEAGE CALCULATION INCLUDING SURFACE SECTOR & "EXTRA MILES" CITIES:**

INPUT: FL/BRUAMSBHX\*LONATHDXBBOMDELBKKSINTYO

↘ indicates a surface between BHX and LON

RESPONSE:

FL/BRUAMSBHX\*LONATHDXBBOMDELBKKSINTYO

CTY	DC	TPM	CUM	MPM	GI	LVL	LWL	HGL	REMARKS
BRU	2								
AMS	2	EH	98	117	EH	M	-	19	EXCEPTION
BHX	2	EH	276	345	EH	10M	12	5	EXCEPTION
LON	2	****	374	247	EH	EXC	66	-	EXCEPTION
ATH	2	EH	1500	1568	EH	20M	71	7	EXCEPTION
DXB	2	EH	2032	4110	EH	M	-	204	EXCEPTION
BOM	3	EH	1199	5428	EH	M	-	323	EXCEPTION
DEL	3	EH	708	5113E	EH	M	-	239	E/BOM 700
BKK	3	EH	1815	7461	EH	5M	167	206	EXCEPTION
SIN	3	EH	897	8311	EH	5M	214	201	EXCEPTION
TYO	3	EH	3311	9535	EH	25M	394	82	EXCEPTION

BHX-LON SURFACE SECTOR OVERRIDE REQUESTED - MILEAGE IGNORED  
BRU-TYO TS, AP MPMS ALSO EXIST - SPECIFY GI  
CARRIER SPECIFIC EXCEPTIONS EXIST FOR LH/LT/U8/RO/SU/AZ/SQ/  
S7/PS/OM/FV/FB/E8/AY/9U/2M/UF/LX/OA/TK/LY/BA/KL/SV/PR/MU/  
MH/HY/GA/CX/BR  
E - CUMULATIVE TPMS INCLUDE MILEAGE DEDUCTIONS

**MILEAGE CALULATIONS INCLUDING CARRIER EXCEPTIONS:**

INPUT: FL/BRULONMIASJU

RESPONSE:

FL/BRULONMIASJU

CTY	DC	TPM	CUM	MPM	GI	LVL	LWL	HGL	REMARKS
BRU	2								
LON	2	EH	206	247	EH	M	-	41	EXCEPTION
MIA	1	AT	4430	5563	AT	M	-	927	EXCEPTION
SJU	1	WH	1042	5455	AT	5M	223	49	EXCEPTION

CARRIER SPECIFIC EXCEPTIONS EXIST FOR LH/LT/U8/RO/SU/AZ/SQ/  
S7/PS/OM/FV/FB/E8/AY/9U/2M/UF/LX/UA/AC/EK/TK/LY/DL/BA/AA/  
LA/SN/OS

Add the carrier code to the input : FL/BRULONMIASJU/AA

FL/BRULONMIASJU/AA

CTY	DC	TPM	CUM	MPM	GI	LVL	LWL	HGL	REMARKS
BRU	2								
LON	2	EH	206	247	EH	M	-	41	
MIA	1	AT	4430	5563	AT	M	-	927	
SJU	1	WH	1042	5128E	5455	AT	M	-	327 E/MIA 550

E - CUMULATIVE TPMS INCLUDE MILEAGE DEDUCTIONS

**FQ ( QUOTE ITINERARY AS BOOKED )**

Fare quote assumptions :

- The **lowest** applicable carrier coded fare for the **class booked**
- A fare quote is required for **all passengers** in booking file.  
All passengers are **adults** (or specified **infants** )
- **All segments** are to be quoted (also waitlisted segments)
- A stopover is assumed where connections are **over 24h00**  
(or over 4h00 if the fare is for NAFQ).
- The ticket will be sold and ticketed in **Belgium/Luxemburg**.
- **Validates:**
  - the Reservation date ↔ Departure date restrictions (Res. X days before departure).
  - the Reservation date ↔ Ticketing date restrictions (Ticketing within X hours/days after reservation)
- **Guarantee:**
  - fares without ticketing restriction are filed/guaranteed for 7 days.
  - fares with ticketing restrictions are filed/guaranteed until the ticketing deadline.

**FQBB ( FARE QUOTE BEST BUY )**

The best buy facility allows the user to obtain the lowest fare for an itinerary **without considering the class booked**. When the best buy input is made Best Buy will check the flights that have been booked for **availability of seats** and whether the fare is applicable. The max number of segments that can be quoted is 8

To modify the Booking File enter..... **FQBBK**

**FQBA ( FARE QUOTE BEST BUY IRRESP.OF AVAILABILITY)**

This entry will quote the lowest fare **regardless of whether seats are available** or not. This fare is for information only.  
If this fare is required then flights would need to be chosen on which seats are available.

**FQA ( FARE QUOTE ALTERNATIVE )**

Provides up to 4 different fare quotes whenever different fares ( carrier coded and lata ),all requiring a same booking class, do exist.

To file the desired fare quote enter eg. **FFn** ( n = the line number of the preferred fare )

**CANCEL FILED FARES**

**FXn** (n to be replaced by the number of the filed fare)

## DISPLAY FARE CONSTRUCTION F\*Q FQL \*FF1

**INPUT: F\*Q** Displays a linear fare construction.

```
FQ-1 G07DEC01 SITI AD
BRU AZ(EH)ROM R165.50MBE TU(EH)TUN M167.73Y AF(EH)LYS M181.96Y
SN(EH)BRU M381.10Y P BRUTUN85.97 NUC 982.26 END ROE1.117814
FARE EUR 1098.00 TAX BE 16.61 TAX YQ 6.00 TAX IT 8.26 TAX VT
1.81 TAX RK .80 TAX RL 6.00 TAX FR 6.51 TOT EUR 1143.99
```

**INPUT: FQL** Displays a fare construction ladder, providing more fare construction details.

FQ	FLIGHT	DATE	DEP	ARR	(DEP. CITY)	FARE	FLOWN	MPM
QUOTE 1	PSGR 1	AD	- SITI					
1	AZ 157 M	20JAN0	07300935		BRU			
2	TU 753 Y	21JAN0	11151225		FCO		R	
2A			MBE		**NUC	165.50		(EH)AZ
3	AF 3383 Y	23JAN0	13101505		TUN		M 362	434
3A			Y		**NUC	167.73		(EH)
4	SN 3590 C	23JAN0	16251750		LYS		M 670	804
4A			Y		**NUC	181.96		(EH)
5					BRU		M 359	430
5A			Y		**NUC	381.10		(EH)
5B					P CTM BRUTUN	85.97		
					TOTAL **NUC	982.26		
5C TAX		16.61 BE		6.00 YQ		8.26 IT		1.81 VT
5D TAX		0.80 RK		6.00 RL		6.51 FR		
5E*FARE*EUR		1098.00				TOT EUR		1143.99
5F	03	NVB23JAN						
5G	04	NVB23JAN						
PTAS NOT PERMITTED								
CITY PAIR INFO TUNLYS								
LAST DATE TO PURCHASE TICKET: 20JAN02								
BAGGAGE ALLOWANCE:								
BRUFCO - 30K FCOTUN - 20K TUNLYS - 20K LYSBRU - 30K								

**INPUT: \*FF1** Displays the same linear fare construction as F\*Q, including ticket details such as fare basis, baggage, date and endorsement restrictions.

```
FQ1 - S1-4 AP 07DEC03 28/AG
P1 ROME/MR G 13DEC03* EUR 1143.99
BRU AZ(EH)ROM R165.50MBE TU(EH)TUN M167.73Y AF(EH)LYS M181.96Y
SN(EH)BRU M381.10Y P BRUTUN85.97 NUC 982.26 END ROE1.117814
FARE EUR1098.00 TAX 16.61BE TAX 6.00YQ TAX 8.26IT TAX 1.81VT
TAX 0.80RK TAX 6.00RL TAX 6.51FR TOT EUR1143.99 SITI
S1 FB-MBE B-30K
S2 FB-Y B-20K
S3 FB-Y B-20K NB-23JAN
S4 FB-Y B-30K NB-23JAN
T S1-4
```

**REMARKS:** F\*Q & FQL are only accessible before End Transaction of the booking file



## PASSENGER MODIFIER (P)

SPECIFIC PASSENGER	<b>FQP1</b>	passenger 1
	<b>FQP1-3</b>	passenger 1 through 3
	<b>FQP2.4</b>	passenger 2 and 4

<b>PASSENGER TYPES</b>	(see PTC input or Fare Display with *PTC or Fare Notes)	
	<b>FQP1-2.3*C10</b>	passengers 1 and 2 = adults, passenger 3 = child 10 yrs PTC for a child → *CNN (NN <u>must</u> be replaced by the age)
	<b>FQP1.2*YTH</b>	passenger 1 = adult, passenger 4 = youth (*YTH)
	<b>FQP2*YTH22</b>	passenger 2 = youth 22 years old (age <u>may</u> be added and will be validated)
	<b>FQ*SRC</b>	passenger 1 or all passengers are seniors
	<b>FQP1*S65</b>	passenger 1 is a senior of 65 years old (*S65) PTC for a senior → *SRC (RC <u>may</u> be replaced by the age and will be validated)



**Accompanied travel requirements** may be attached to a Passenger Type Code to prevent you from pricing this passenger separately. These PTC must be priced in the same fare quote/filed fare as the accompanying passenger.

E.g. **FQP1.2\*CNN** and not FQP1 and FQP2\*CNN (NN must be replaced by the age)

If the accompanied passenger is booked in a separate booking file, you can only FQ this passenger by combining the FIC modifier (see next page) and the CNN modifier. E.g. **FQ@YAP1M/\*C10**

When a regular adult fare is less expensive than the fare for the PTC you are specifying, the system will return the adult fare with the alert "**best fare for this passenger**". If you still prefer the PTC fare, you will need to use the PTC preceded by \*\*.

E.g. **FQ\*\*YTH**

**Abonnement fares** require a \*FR Passenger Type Code (\*ABB is only used for the Fare Display) but also an additional Booking File field **C.FD/AFcardnumber**

### PTC exceptions – FD versus FQ

	<b>FD</b>	<b>FQ</b>	
Child	*CNN	*C10	Child 10 yrs
Senior	*SRC	*SRC	Senior
		*S65	Senior 65 yrs
Youth	*YTH	*YTH	Youth
		*YTH21	Youth 21 yrs
Abonnement	*ABB	*FR	Abonnement
Visit USA	*VAC	*VACLBE	Visit Usa - Resident of Belgium
Visit USA Child	*VNN	*V10LBE	Visit Usa Child 10 yrs – Resident of Belgium
Unaccompanied Minor	*UNN	*U10	Unaccompanied Minor 10 yrs

### SEGMENT MODIFIER (S)

FQS1-5 segments 1 through 5

FQS2.7 segments 2 and 7

### PLATING CARRIER

FQCKL Ticket will be printed on CIP of KLM.  
Selection of the plating carrier upon Fare Quote request will allow the system to apply all airline specific taxes on this fare calculation.

### TICKETING DATE MODIFIER (T)

FQT Prices a booking file using "today" as the booking date.

This modifier is indispensable if you want to autoprice a fare with ticketing restrictions (ticketing must be completed within X hours/days after reservation) **after** the ticketing date has passed.

\*\*\*\*\*status MODIFIED, not guaranteed \*\*\*\*\*

### FARE IDENTIFICATION CODE - FIC (@farebasis)

Enables you to force the FQ to apply a certain fare, even if the itinerary doesn't meet the rules of that fare. **Using the FIC results into a FQ with the requested fare, eventually providing you with warning messages about unmatched rules if not all the rules are met.**

FQ@YLAP3M quotes the itinerary in apex fare

FQ@YLAP3M/S1.4 quotes the apex fare for segments 1 and 4

FQS1@CL.2@Y quotes segment 1 at the CL fare, and segment 2 at the Y fare

FQS1.4@YLAP3M quotes segment 1 (automatically if fare available) and quotes segment 4 at the apex fare. This entry is often made by mistake!

\*\*\*\*\*status MODIFIED, not guaranteed IF warning about unmatched rules \*\*\*\*\*

\*\*\*\*\*use ONLY correct fare basis as displayed in FD\*\*\*\*\*

\*\*\*\*\*attach the input to the FQ or to the segment number\*\*\*\*\*

### E-TICKET/PAPER TICKET VALIDATION

FQET E-ticket only (some fares do not allow paper tickets anymore)

FQPT Paper ticket only (some fare require a surcharge for a paper ticket)

Both conditions are filed in the Fare Notes, paragraph Sales restrictions

## PRIVATE FARES

FQ:P private fares only  
FQ:N normal fares only  
FQ-CODE normal and private (with OR without account code), whichever is the lowest.

## INCREASE/DECREASE PRICING MODIFIER

\*IP Increases the fare with a percentage. E.g. \*IP7 (increase with 7pc)  
\*IF Increases the fare with an amount. E.g. \*IF50 (increase with 50 EUR)  
  
\*RP Decreases the fare with a percentage. E.g. \*RP75 (decreases with 75pc)  
\*FA Decreases the fare with an amount. E.g. \*FA100 (decreases with 100EUR)

! The amounts specified with the IF and FA modifiers are taken in the currency of the Fare (= country of origin of the itinerary)

\*\*\*\*\*status MODIFIED, not guaranteed\*\*\*\*\*

## NO STOPOVER MODIFIER (X)

FQX3 no stopover at the destination of segment 3  
FQX1.3 no stopover at the destinations of segment 1 and 3

## STOPOVER MODIFIER (O)

FQO3 stopover at the destination of segment 3  
FQO1.3 stopover at the destinations of segment 1 and 3

## SPECIFIED BOOKING CLASS (.)

FQ.F quote booking file in first class  
FQ.Y quote booking file in economy class  
\*\*\*\*\* fare not filed \*\*\*\*\*

## SELLING AND TICKETING COUNTRY (.citycity)

FQ sold in Brussels, ticketed in Brussels  
FQ.BRUPRG sold in Brussels, ticketed in Prague (e.g. prepaid )  
FQ.GVAGVA sold in Geneva, ticketed in Geneva (e.g. rerouting )  
\*\*\*\*\* status MODIFIED\*\*\*\*\*

## PERSONAL GEOGRAPHY MODIFIER

\*VACLBE

\*VAC = Passenger Type Code Visit Another Country

**L = location**

**BE=country code (here Belgium)**

Used to quote fares that have specific location restrictions. Must be used in combinations with a PTC

! Country codes can be found with the input .LElandname (for instance .LEbelgium)

## TAX EXEMPT (TE)

FQTE

fare quote without taxes

FQTE-US

fare quote without US taxes

**PRICING MODIFIERS MAY BE COMBINED IN ANY ORDER (BUT SEPERATED BY AN OBLIQUE) AND ATTACHED TO FQ -FQBB - FQBA - FQA:**

*e.g. FQP1.2\*CNN/S1-4/X2/T      e.g. FQBBP1\*\*YTH/S2.3/ET*

**EXCEPTION: @ FIC MUST BE ATTACHED TO THE FQ OR TO A SEGMENT NUMBER.**

Is the facility to obtain a fare quote for an itinerary up to 15 sectors without booking any segments.

INPUT: **FQP** followed by the city/airport\* codes of the itinerary

E.G. **FQPBRULHRFCOATHBRU**

\* It is advisable to use airport codes in order to obtain a correct tax calculation

The FARE QUOTE PLANNER without modifiers will:

- use only IATA fares
- consider all points as stopovers
- consider the date of the input as departure date
- give you up to **10 different fares**

**FOLLOW UP ENTRIES :**

REDISPLAY .....**FQP\***

FARE CONSTRUCTION ( of all fares ) .....**F\*Q**

LINEAR FARE CONSTRUCTION .....**FQP\*1** (1 being the line nr of the chosen fare )

FARE QUOTE LADDER .....**FQL1** (1 being the line nr of the chosen fare )

FARE NOTES .....**FQN1** followed by :

**FN2/ALL** (All rules of 2nd fare comp.)

**FN2/P1.5.10** (Paragraphs 1,5 and 10)

## **MODIFIERS :**

CARRIER CODE:	<b>+BA</b> per sector or on whole itinerary FQPBRU+BALHR+AZFCO... ( per sector ) FQPBRULHRFCO+BA (whole itin. ) Some markets require a carrier code as no lata fares may exist e.g. USA
DATE OF TRAVEL:	<b>01JUN</b> per sector, and in between 2 cities can be used for the whole itin. if entered on the 1st sector FQPBRU01JUNLONROM...
NO STOPOVER:	<b>X-</b> default is stopover, regardless of dates. Only per sector. FQPBRUX-LONROM...
SURFACE SECTOR:	<b>--</b> in between 2 cities FQPBRULONROM--ATHBRU
PASSENGER TYPE CODE	<b>*CNN</b> or any other passenger type code only on whole itin. FQPBRULONROMATHBRU*CNN
BOOKING CODE:	<b>.C</b> per sector or on whole itinerary combination with carrier code is mandatory FQPBRU.C+SNLON.Y+AZROM..( sector ) FQPBRULONROM.C+BA ( itin. )
POINT OF SALE AND TICKETING:	<b>.BRUROM</b> on whole itin. FQPROMATHBRU.BRUROM (=sold in Brussels,ticketed in Rome )
PERSONAL GEOGRAPHY	<b>*ADTLTU L= location TU=country code (here Tunisia)</b> Used to quote fares that have specific location restrictions. Must be used in combinations with a PTC (e.g. *ADT= adult) FQPTUNBRU*ADTLTU
PLATING CARRIER:	<b>/CYY</b> (YY to be replaced by the plating carrier code) This enables the system to provide a FQ with PFC taxes ( USA ) included The use of airport codes is mandatory ! FQPBRULHRJFK+BA/CBA
E- OR PAPER TKT	<b>/ET or /PT</b> FQPYULYYZ+AC/ET/CAC

TAX EXEMPT: /TE  
/TE-US  
only on whole itinerary  
FQPBOSMIA+AA/CAA/TE-US

INCREASE \*IP Increases the fare with a percentage. E.g. \*IP7 (increase with 7pc)  
\*IF Increases the fare with an amount. E.g. \*IF50 (increase with 50 EUR)  
FQPBRUMILROM\*IP7

DECREASE \*RP Decreases the fare with a percentage. E.g. \*RP75 (decreases with 75pc)  
\*FA Decreases the fare with an amount. E.g. \*FA100 (decreases with 100EUR)  
FQPBRUMILROM\*FA100

**ALL MODIFIERS MAY BE COMBINED IN ANY ORDER**

**GENERAL INFO**

Input **FTAX-nn** (nn = country code) will display all non-ticketable and ticketable taxes.

**TIPS FOR AUTOMATIC TAX CALCULATION**

If a booking file exists	→	FQBA FQ.Y or FQ.C FQP.....	→	- attach *CH or CYY ,if needed
If no booking file exists	→		→	- F*Q provides tax details - specify transits and carrier code in FQP, it may influence the tax results

**PASSENGER FACILITY CHARGES** (tax code XF)

Fare Quote : **FQC..**      Indicate plating carrier



# LOW FARE SHOPPING TOOL

The low fare shopping tool is available exclusively in Viewpoint™. It is a combination of an availability and fare quote. You can use it to display up to 7 fares and available flights for each fare. You can access Viewpoint from the Companions menu or the Viewpoint button in Focalpoint. Once Viewpoint is launched you access the low fare shopping tool from the Shop toolbar button on the Itinerary screen.

You can include up to 8 city pairs in your request.

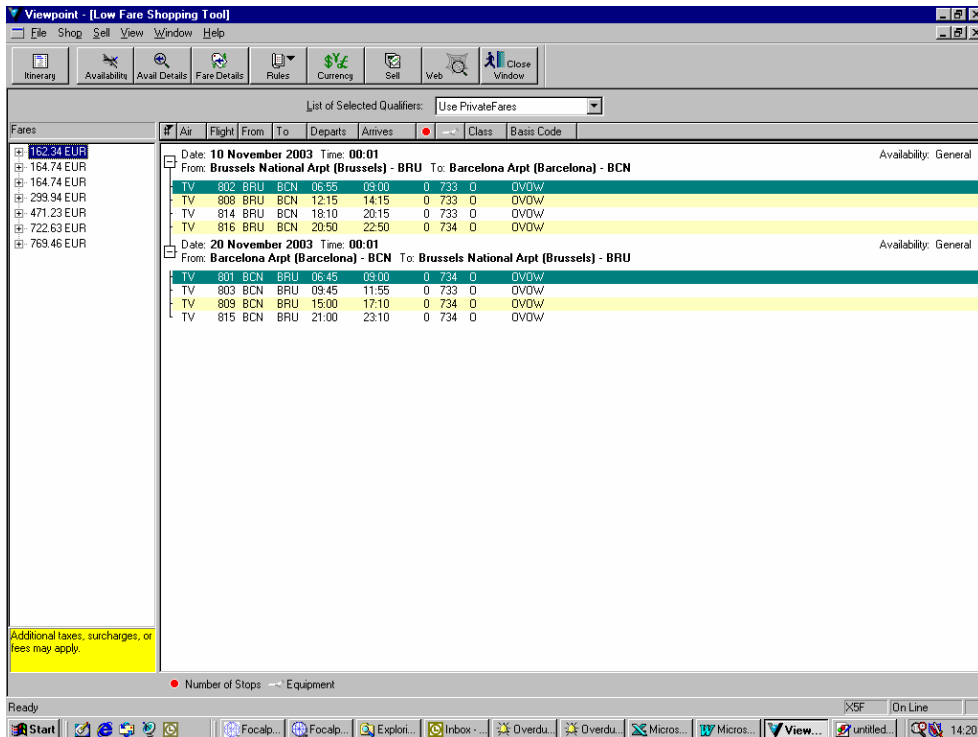
The following screen is an example of a search for a roundtrip Brussels-Barcelona

The screenshot shows the 'Low Fare Shopping Tool' window with the following details:

- Basic Fare Information:** Maximum Fare, Sell City, Ticket City, and Preferred Carrier fields are present.
- Segment Specific Information:** Date: 20/11/03, \* - All airports. Departure City and Arrival City fields are empty. Time: 00:01 by Departure. Earliest Time: 00:00, Latest Time: 23:59. Cabin: No Preference. Flight Type: All Types.
- Airlines:** Three dropdown menus for selecting airlines, with 'Include' and 'Exclude' radio buttons.
- Connecting Cities:** Three dropdown menus for selecting connecting cities, with 'Include' and 'Exclude' radio buttons.
- Use PrivateFares:** Checked. PrivateFares Only: Unchecked. Account: Empty. Pseudo: X5F. Contract: Empty.
- Auto-Tab:** Unchecked.
- Itinerary Planner:** Shows a roundtrip itinerary:
  - 10 November 2003, Time: 00:01, From: Brussels National Arpt (Brussels) - BRU, To: Barcelona Arpt (Barcelona) - BCN
  - 20 November 2003, Time: 00:01, From: Barcelona Arpt (Barcelona) - BCN, To: Brussels National Arpt (Brussels) - BRU
- Selected Options:** Use PrivateFares, Pseudo: X5F, Number of Passengers: 1, Time: 00:01 by Departure, No Earlier Than: 00:00, No Later Than: 23:59.
- Buttons:** Add, Modify, Delete, Search, Cancel.

After you filled in the necessary information like date / itinerary and optional information such as maximum fare, preferred airline, passenger type and so on (see also the OTHER screen), click the Search button.

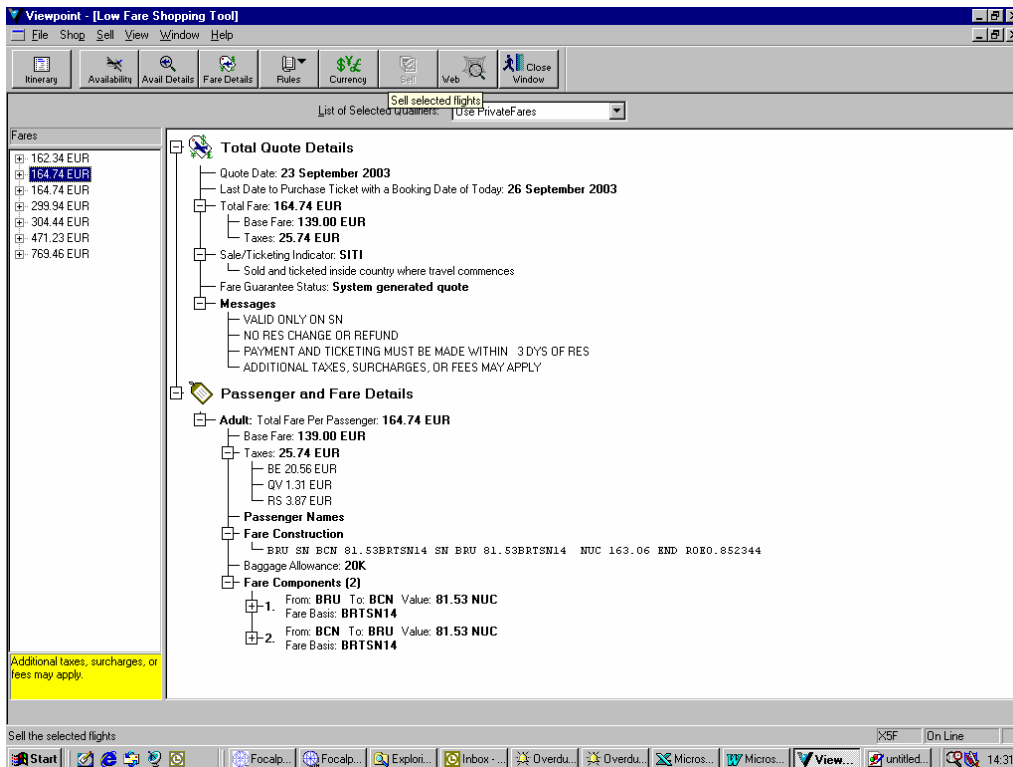
A screen is displayed with fares and applicable flights.



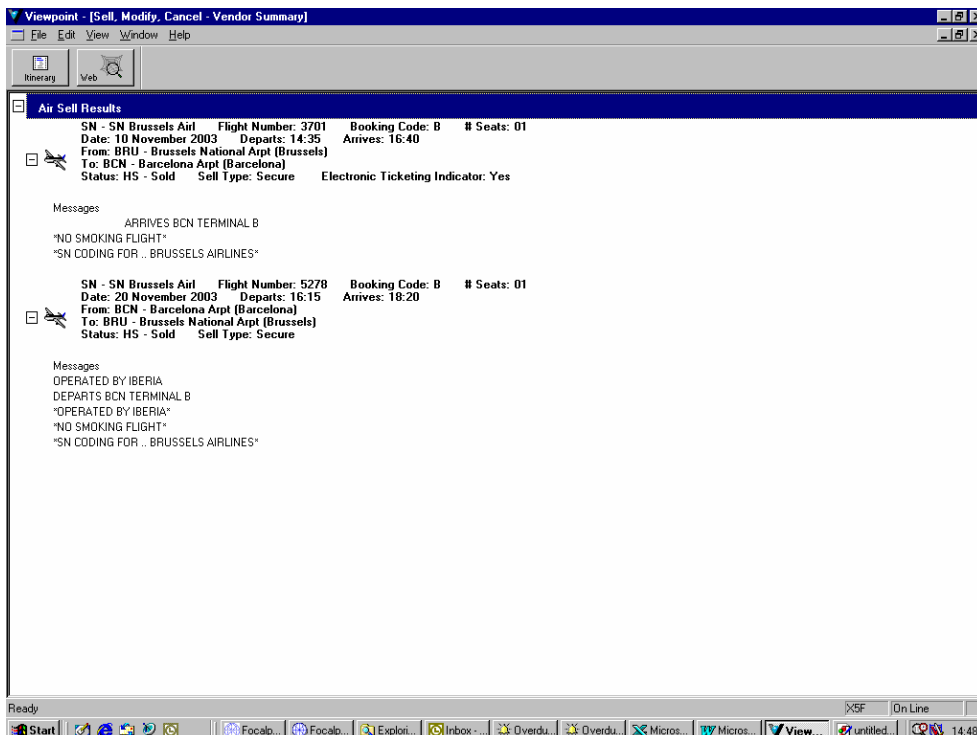
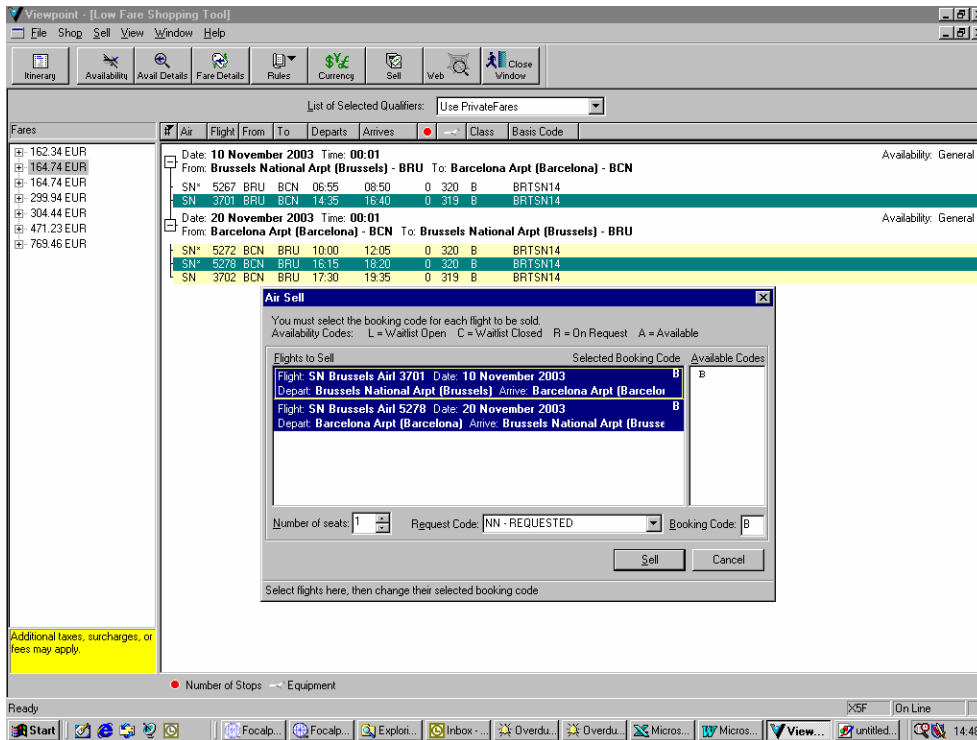
From this result you can:

- display fare details
- display most restrictive rules, rule summary, rule details
- sell selected flights using predefined booking codes

To get more information on fare details, select the fare you want and then click the Fare Details button



Once you decided on the fare you want to sell, you can return to the availability screen by clicking the Availability button. You can now select the flights that you want to sell (use the CTRL button to click on both, departure and return flight) and click the Sell button.



Toggle back to Focalpoint and with the input \*R you can display the booked segments. Finish your Booking File as usual and add a FQ to the the booking file.

Alternately you can book the flights manually in Focalpoint or finish the Booking File in Viewpoint.

## QUICK REFERENCE

### FARE DISPLAY

FD10DECGVA	FARE DISPLAY BRUGVA ON 10DEC
FD/SR	FOLLOW UP FD ON SWISSAIR
FD-RT	FOLLOW UP FD RETURN FARES ONLY
FD*YTH	FOLLOW UP FD FOR YOUTH FARES
FDC*/n	SHOW INTERLINE BKG CLASSES FOR FARE LINE NR n
FR*n	SHOW ROUTING FOR FARE LINE NR n
FD*n	SHOW FIRST AND LAST TRAVEL & TICKETING DATE
FD*	REDISPLAY FD
FN*n/ALL	SHOW ALL FARE NOTES FOR FARE LINE NR n
FN*n/P5.18.27	SHOW ALL NOTES RELATED TO PRIVATE FARE TICKETING

### MILEAGE

FL/BRUAMSMAN	CALCULATE MILEAGE
FL/S1-4	CALCULATE MILEAGE FOR SEGM. 1 TO 4

### FARE QUOTE

FQ	CALCULATE FARE OF BOOKING FILE
FQBB	CALCULATE CHEAPEST FARE ON BF
FQBA	CALCULATE CHEAPEST FARE ALTERNATIVE
FQA	FARE QUOTE ALTERNATIVE
FF2	FILES THE SECOND FARE AFTER FQA
FQP1.3*C10	FARE QUOTE PAX 1 AND 3 - 3 IS CHILD OF 10 YRS
FQS1-4	FARE QUOTE SEGMENT 1 TO 4
FQT	FARE QUOTE A BF USING "TODAY" AS BOOKING DATE
FQ@YLAP50	FARE QUOTE MUST BE YLAP50 FARE
FQL	DISPLAY LADDDER FARE CONSTRUCTION
F*Q	DISPLAY LINEAR FARE CONSTRUCTION
*FF1	DISPLAY FILED FARE NR 1
*FF	DISPLAY ALL FILED FARES
FX1	CANCEL FILED FARE NR 1
FXALL	CANCEL ALL FILED FARES
FF1@R	RESTORE FILED FARE NR 1

### FARE QUOTE PLANNER

FQPBRULONHKG	FQ FOR ITINERARY BRU/LON/HKG
F*Q	DISPLAY FARE CONSTRUCTION FOR ALL FQS
FQP*1	DISPLAY DETAILED FARE CONSTR. FOR 1ST FQ
FQPBRU.....+BA	FQ FOR ITIN ... WITH BA
FQPBRUX-LONHKG	FQ FOR ITIN BRU/LON/HKG WITH TRANSIT IN LON
FQPBRULON--MANBRU	FQ WITH SURFACE BETWEEN LON AND MAN